

HANDHELD MOBILE MAPPING / PROPERTY SURVEYING GOES DIGITAL

ZEB-PANO

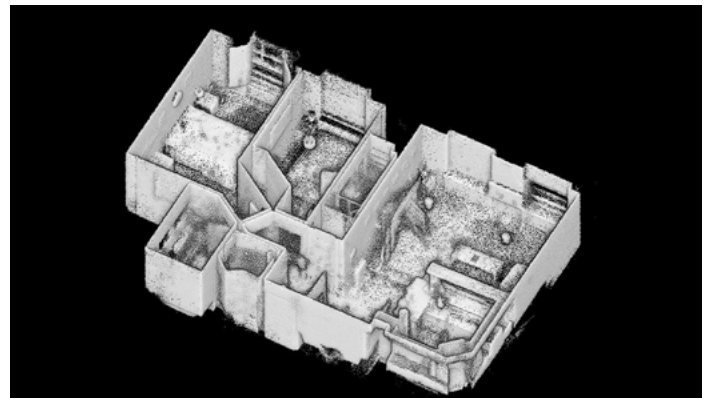


geoslam.com

ZEB

PANO

Capture, process,
create



Capture and create real estate and commercial property floorplans with informative 360° panoramic photography for enhanced property surveys. 3D measurable information and imagery captured with the ZEB PANO uses the leading SLAM algorithm to automatically and accurately position panoramic photos and enables the creation of both 2D and 3D property floorplans.

The ZEB PANO used alongside the ZEB-REVO RT captures millions of data points and high-resolution panoramic imagery at the same time, matching the data together to generate a buildings layout, floorplan and marketing description.

From the inventors of the worlds strongest SLAM algorithm, the ZEB PANO is the tool you need to digitalise your surveying and property marketing process.

- Quick and easy property surveying
- Accurate data and high-resolution photography
- 360° interactive digital data
- Specialist surveyors not required

End to end process

GeoSLAM Hub 5.2 takes the complexity out of data processing, easily drag and drop your property scan and Hub, GeoSLAM's leading software will sync your geospatial data and photography for a fully digital representation of the property. 'Hot spots' give the viewer an interactive experience, so detailed floorplans, measurements and property descriptions can be created.

CAPTURE

Walk through a property with the ZEB Pano, scan in the time it takes to walk between rooms

PROCESS

Upload your scan to GeoSLAM Hub, where the 360° imagery and scan data can be seen relative to the room the information was captured

CREATE

Use Hub to create accurate floorplans and property descriptions

Why use the ZEB PANO?

- Capture floorplans and hi-res photography at the same time, with one visit to a property
- Carry out more surveys in a day
- No need for separate measuring and photography teams
- Standardised data capture
- See the true size of the property with accurate floorplan dimensions
- Data captured is compliant with RICS guidelines (1:100 scale)
- No re-visits to collect missed data
- Consistent data capture, the quality of the scan isn't dictated by the skill of the person operating the scanner

Feature Chart

Average time to scan 3 bedroom house (85 sqm)	5 minutes
Suitable property types	Residential Commercial Retail
Total System Weight	3.8kg
Scanner	
Accuracy	1-3cm
Acquisition	43,000 points per second
Range	30m
Raw Data File Size	10MB a minute
Weight	850g
Datalogger	
Battery	PAG L90 SLIM 90 Wh 14.8V 16.1 Ah
Operational Time	90 mins
Storage	120GB
Operational temperature	10° - 50°
Ports	ZEB Cable (LEMO)
Weight	2.4kg
Camera	
Model	RICOH THETA V 630 Degree
Resolution	14 MP
Weight	209g
Storage	19GB
Field of Capture	360°



About GeoSLAM

Headquartered in the UK, GeoSLAM is a global market leader in “go-anywhere” 3D mobile mapping technology. Our unique handheld technology is highly versatile and adaptable to all environments – especially spaces that are indoor, underground or difficult to access, providing accurate 3D mapping.

Our technology is easy to use and within minutes’ customers can build a highly accurate 3D model of their environment. GeoSLAM was founded in 2012 as a joint venture between CSIRO (Australia’s National Science Agency and the inventors of Wi-Fi) and 3D Laser Mapping. Serving the surveying, engineering, mining, forestry, facilities and asset management sectors, GeoSLAM has an expanding network of over 80 distributors, with a presence in 57 countries across 6 continents.

Get in Touch

If you want to slash your survey times with no loss of accuracy, get in touch with GeoSLAM today, using the contact details below.



GeoSLAM, Innovation House,
Mere Way, Ruddington Fields Business Park,
Ruddington, Nottinghamshire, NG11 6JS,
United Kingdom

t +44 (0) 1949 831 814
e info@geoslam.com
w geoslam.com